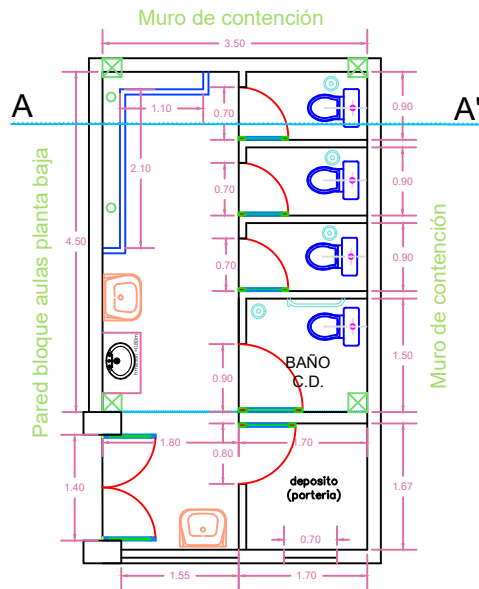
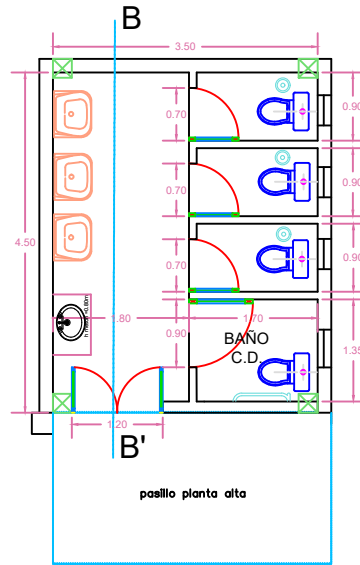


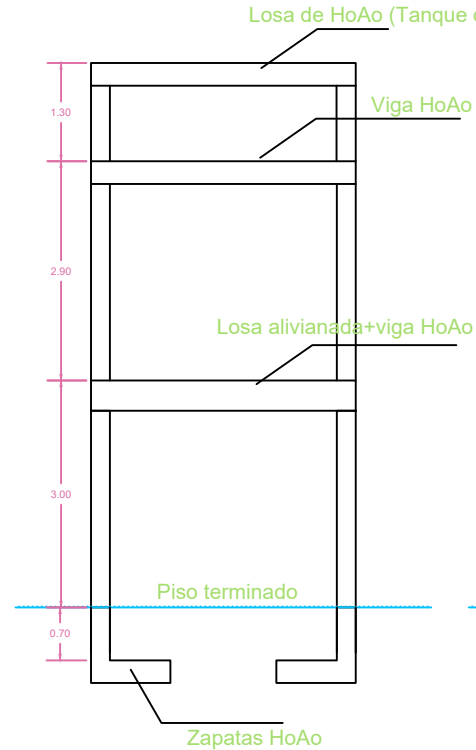
Planta baja  
(Baño Varones)



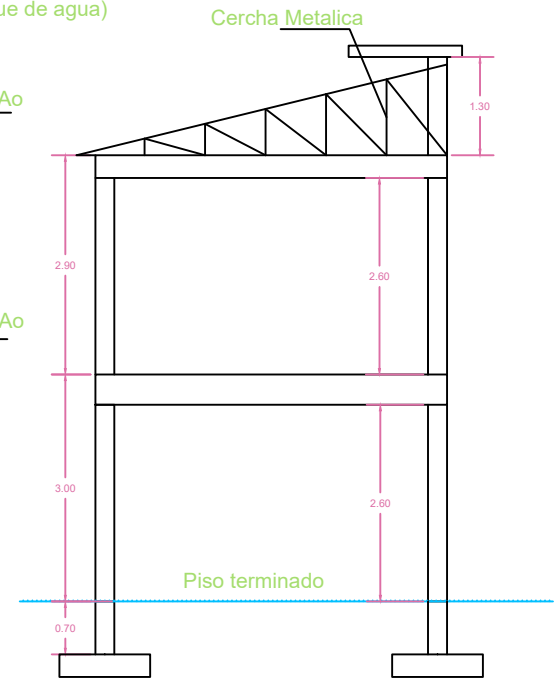
Planta alta  
(Baño damas)



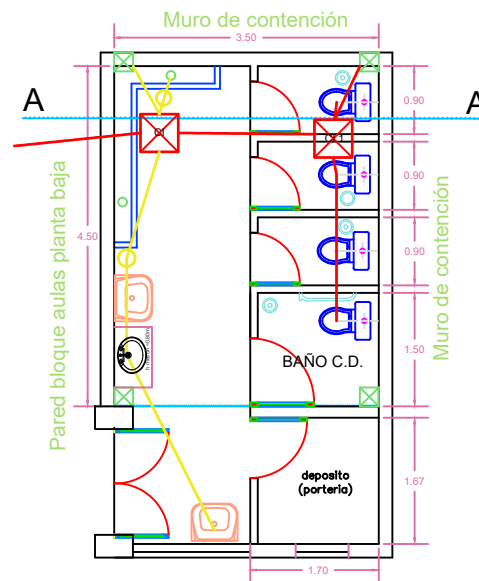
Corte A-A'



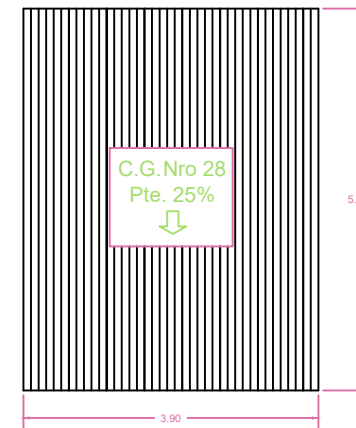
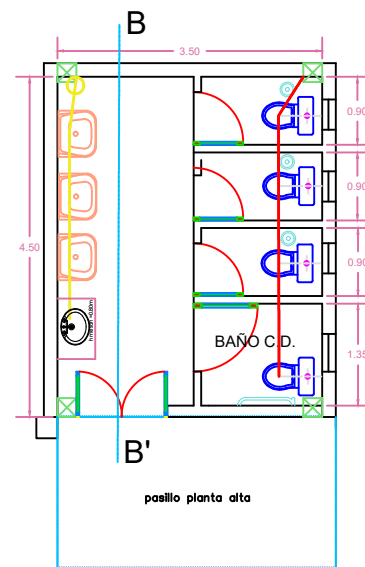
Corte B-B'



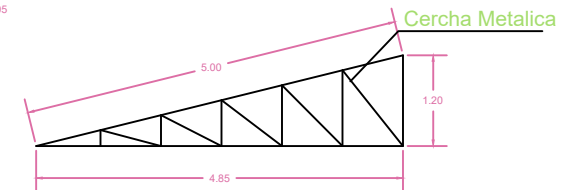
Planta baja  
(Baño Varones)  
Sistema sanitario



Planta alta  
(Baño damas)  
Sistema sanitario



Cubierta metalica  
Calamina galvanizada  
Nro 28



GOBIERNO AUTONOMO MUNICIPAL DE ORURO

Plano General

Esc.: ind.